

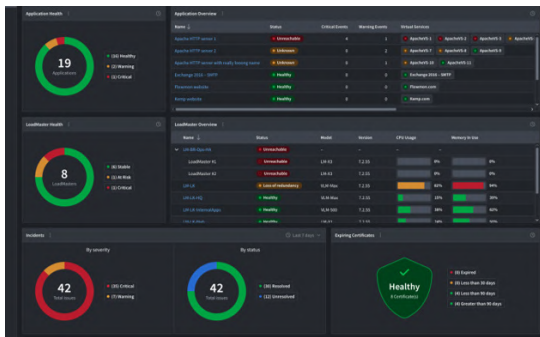
# Insights and Observability for Your Applications and LoadMasters

## OVERVIEW

### Unmatched Simplicity, Flexibility and Value

Progress LoadMaster 360 provides organizations of all sizes with the insights and analytics necessary to validate that applications are performing as expected to deliver the best possible user application experience. Working across cloud, virtual and hardware environments, LoadMaster 360 is the unified dashboard for observing application delivery performance, security and configuration.

### What Can You Do with LoadMaster 360?

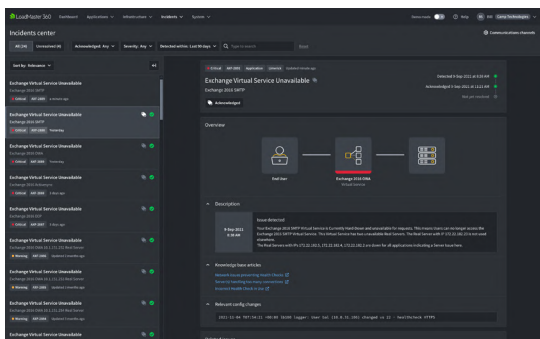


#### Application Analytics and Telemetry

Access in-depth dashboards to monitor application performance, health and security, including live and historical insights. With customizable views, application owners can fully utilize the required insights for their specific NetOps and SecOps roles.

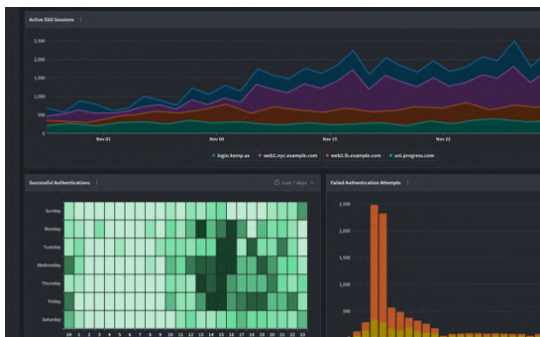
#### Certificate Lifecycle Management

Gain insights into your certificate estate and prevent outages by receiving notifications on expiring certificates. Provide operations and security teams with a single point of control for certificate management across cloud and on-premise infrastructure.



#### Application Delivery Incident Management

The Incident Center assists with the identification of application trends and behaviors. Early detection of application and security trends and the ability to review behaviors over time can help you better address issues and minimize user impact. Avoid alert fatigue and the challenges of root-cause analysis and remediation with context-rich guidance.



#### Authentication Management

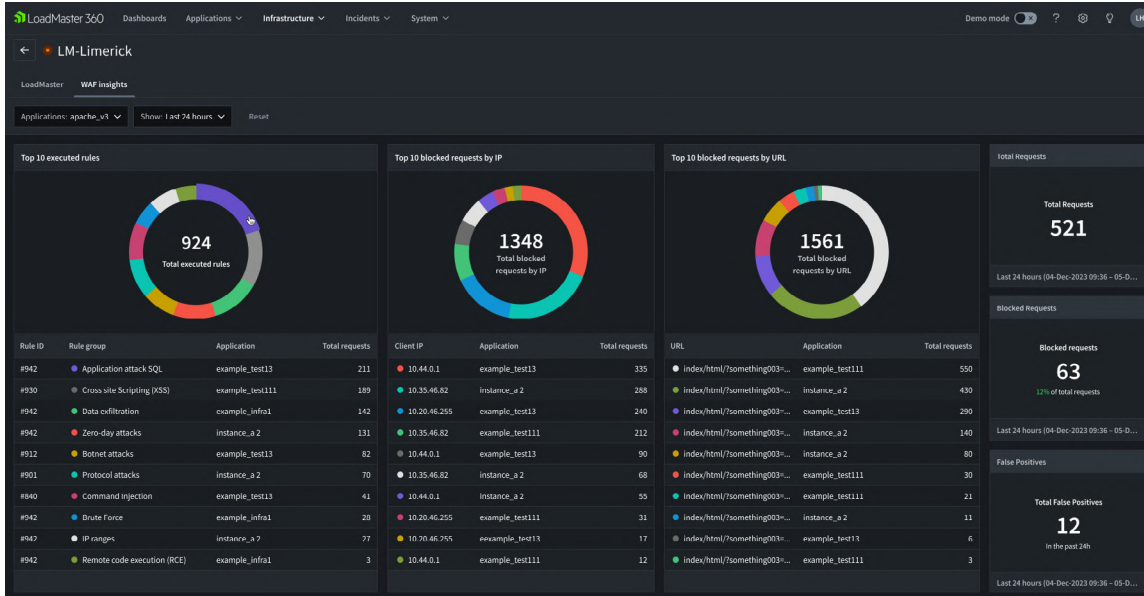
This unified view of authentication efforts across all applications and authentication providers, like Active Directory, reduces the complexity of your security analysis.

Easily identify and remediate security and authentication issues against each domain. Access color-coded graphs, heat maps and drill-down analytics that display active SSO sessions and successful and failed cross-platform login attempts.


# Web Application Firewall (WAF) Tuning and Monitoring

**Security Monitoring:** The new Enhanced WAF feature helps generate security insights across your environments on an application-by-application basis. Quickly identify details that include blocked requests, attack types, event origin and false positive activity.

**Advanced Tuning:** Enhanced WAF also helps to minimize the time required for LoadMaster WAF configuration through its AI-driven false positive identification and smart rule tuning. You can view individual false positive events, examine the activity from intelligently parsed logs and configure rule exclusions to properly tune your ruleset to allow only legitimate traffic.




## The Benefits of LoadMaster 360




### Improve Application Availability

Provides insight on delivery metrics and status that are key to maintaining application availability, health and performance.




### Simplify Fleet Monitoring

Integrates all cloud and on-premises application delivery management into a consolidated view for total visibility, no matter where your LoadMasters are located.



### Accelerate Issue Resolution

Accelerates root cause analysis and reduces alert fatigue and time to resolution through issue alerting with in-context guidance.



### Broaden Your Application Security

Displays application security data in a highly detailed and visual format. Drill-downs help you quickly identify the who, when and where of potential security issues.



© 2024 Progress Software Corporation and/or its subsidiaries or affiliates.

All rights reserved. Rev 2024/07 | RITM024-8583

**Authorized Distributor :**



**HQ Office (KL)**  
**SecureOne Distribution Sdn Bhd**  
 200801027033 (828358 - X)  
 No.7, Jalan 1/109E, Desa Business Park,  
 Taman Desa, Jalan Kelang Lama,  
 58100 Kuala Lumpur, Malaysia.

Tel: +6(03) 7984 6086 Fax: +6(03) 7984 6032  
 Email: sales@secureone.com.my

**Northern Office**  
**SecureOne Distribution (Northern) Sdn Bhd**  
 201201003647(977172 - H)  
 1A-2-02 @ One Precint (1160),  
 Lengkok Mayang Pasir,  
 11950 Bayan Baru, Penang, Malaysia.

Tel: +6(04) 619 2692 Fax: +6(04) 619 2699  
 Email: northern@secureone.com.my